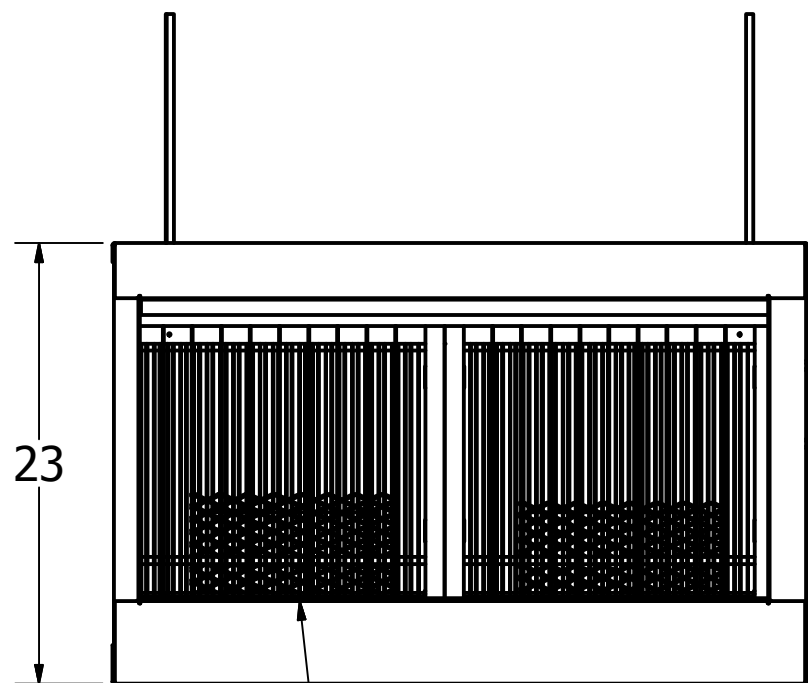


2 X 800 CFM UAPC  
PRECIPITATOR CELLS

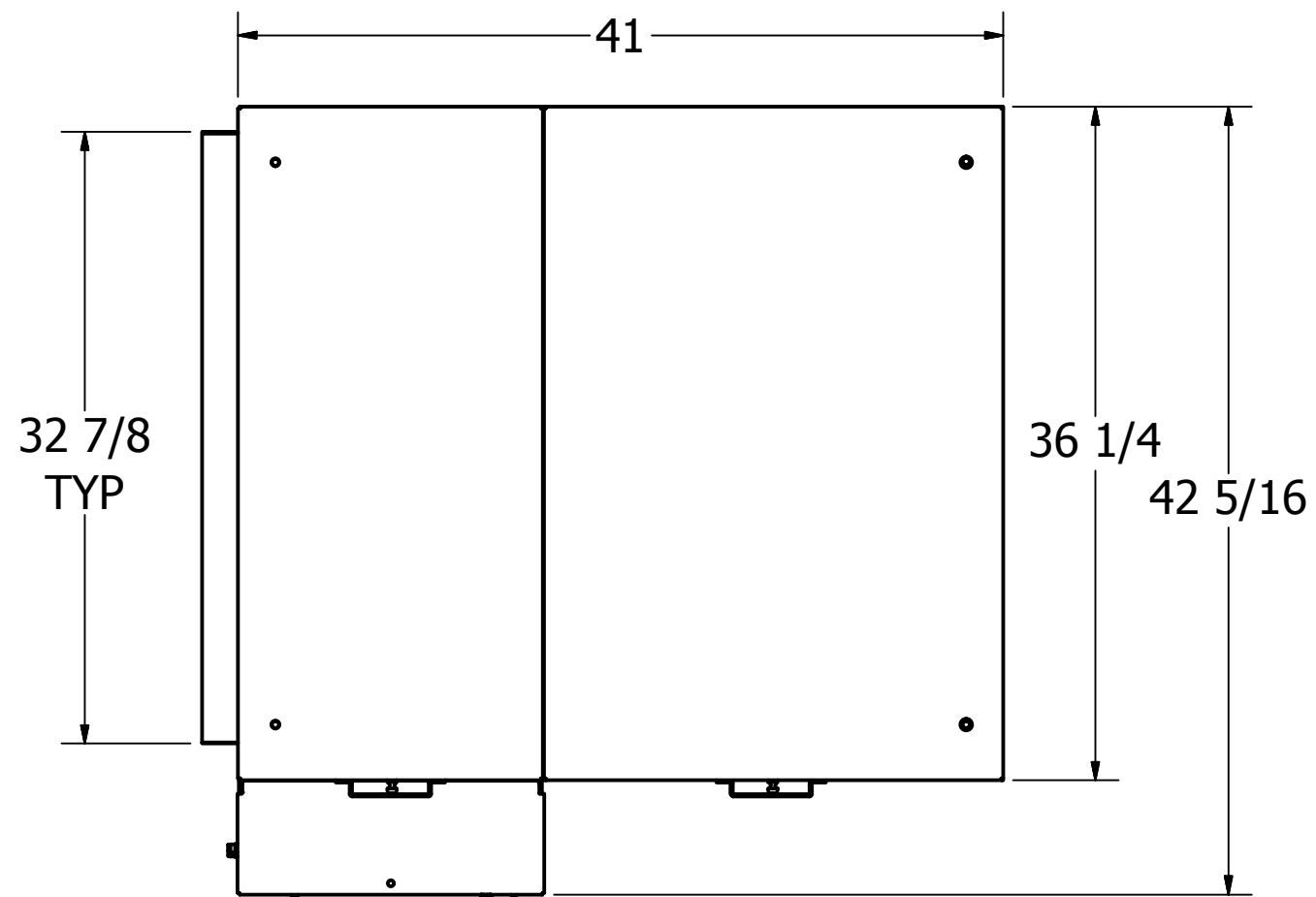
POWER PACK UNIT,  
MOUNTED  
(SEE DETAIL)



1" ALUMINUM  
MESH PRE-FILTER

ALLOW 3 FEET  
IN FRONT OF  
UNIT FOR CELL  
REMOVAL

6 3/4



SAFETY DOOR  
INLOCK SWITCH



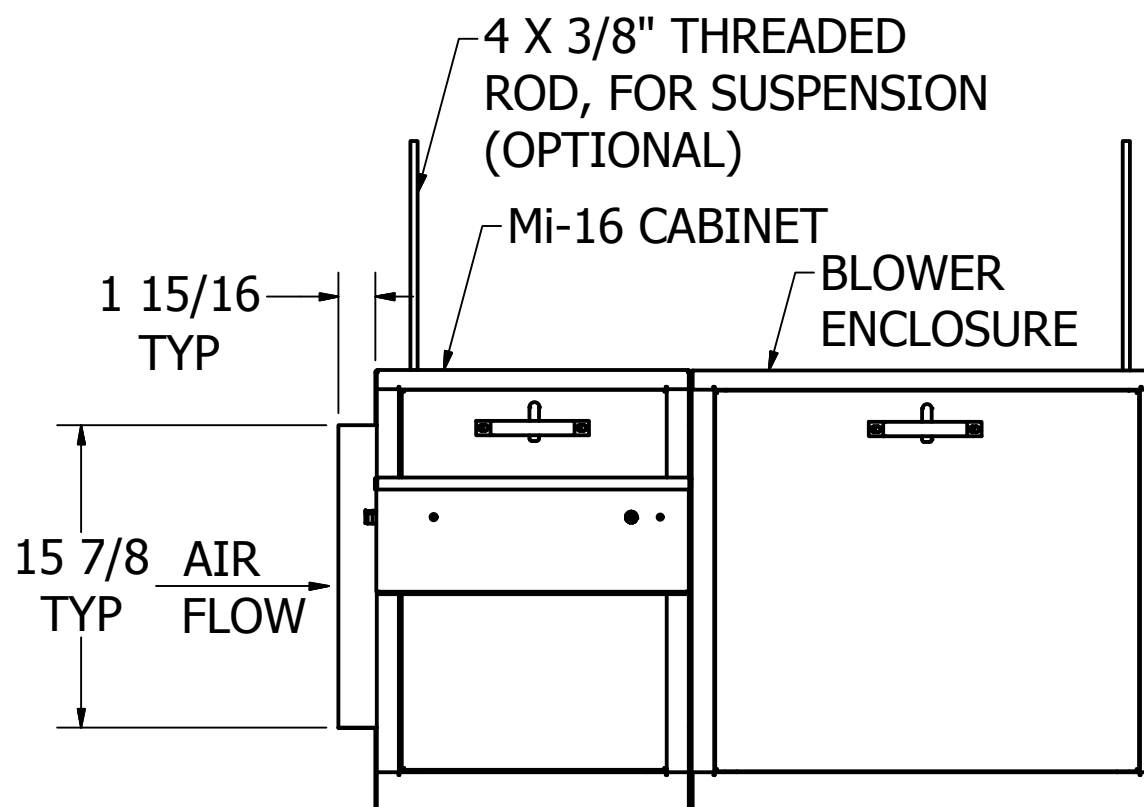
INPUT  
POWER  
ON LIGHT

ON/OFF SWITCH

HV POWER ON LIGHT

120V STANDARD 18/3 CORD  
WITH 15 AMP 3-PRONG PLUG  
(230V-1PH OPTIONAL)  
3 FOOT LENGTH

POWER PACK DETAIL  
SCALE 1 / 6



4 X 3/8" THREADED  
ROD, FOR SUSPENSION  
(OPTIONAL)

Mi-16 CABINET

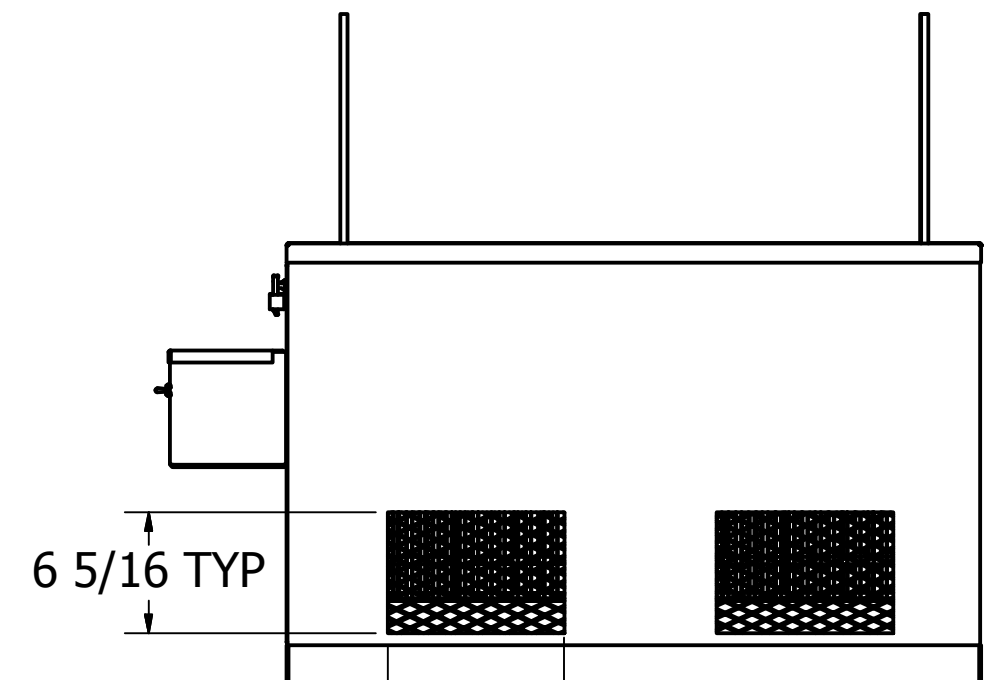
BLOWER  
ENCLOSURE

1 15/16  
TYP

15 7/8  
TYP

AIR  
FLOW

CLEAN AIR  
EXHAUST



6 5/16 TYP

9 3/16  
TYP

MATERIAL: 16 GA GALVANIZED

COMPANY  
CONFIDENTIAL

This drawing and all information herein is the property of Universal Air Products Corp. It is confidential and must not be made public or copied. It is loaned, subject to return upon demand. It is not to be used directly or indirectly in any way detrimental to the interests of UNIVERSAL AIR PRODUCTS.

DRAWN KEF	8/27/2014	UNIVERSAL AIR & GAS PRODUCTS CORP. 1140 KINGWOOD AVE NORFOLK, VA 23502		
CHECKED		TITLE		
QA		Mi-16: 1600 CFM SELF-CONTAINED AIR CLEANER WITH BLOWER, PORTABLE		
MFG		SIZE		
APPROVED		C		
		DWG NO		REV
		03460082UL		B
		SCALE	1/10	SHEET 1 OF 1