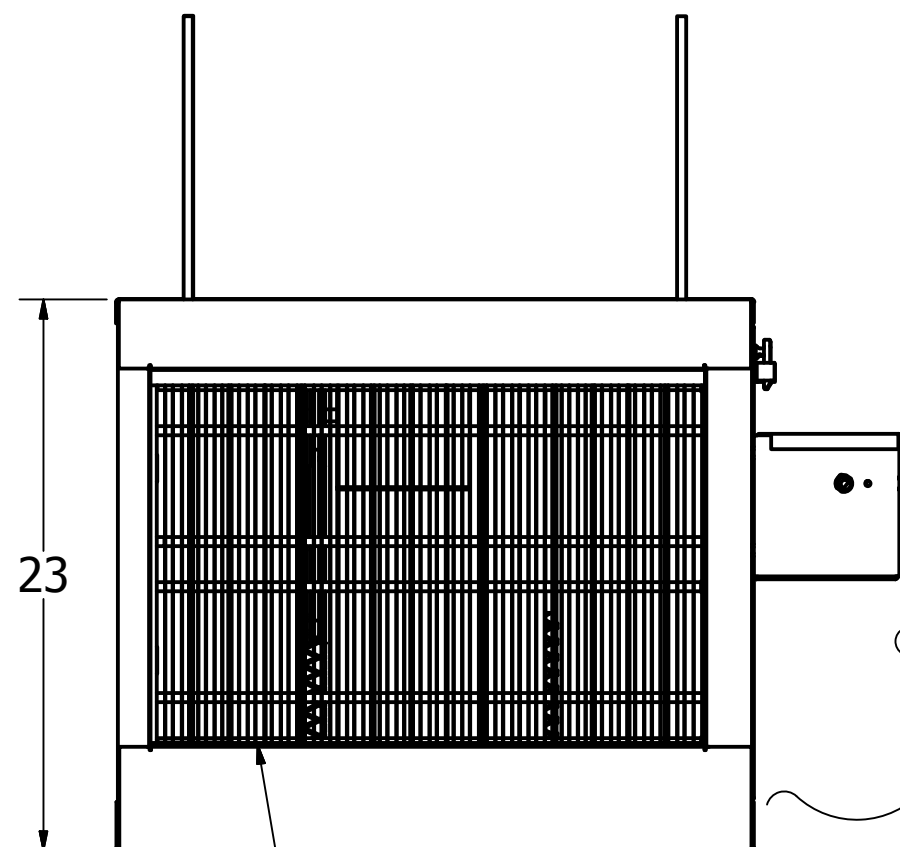
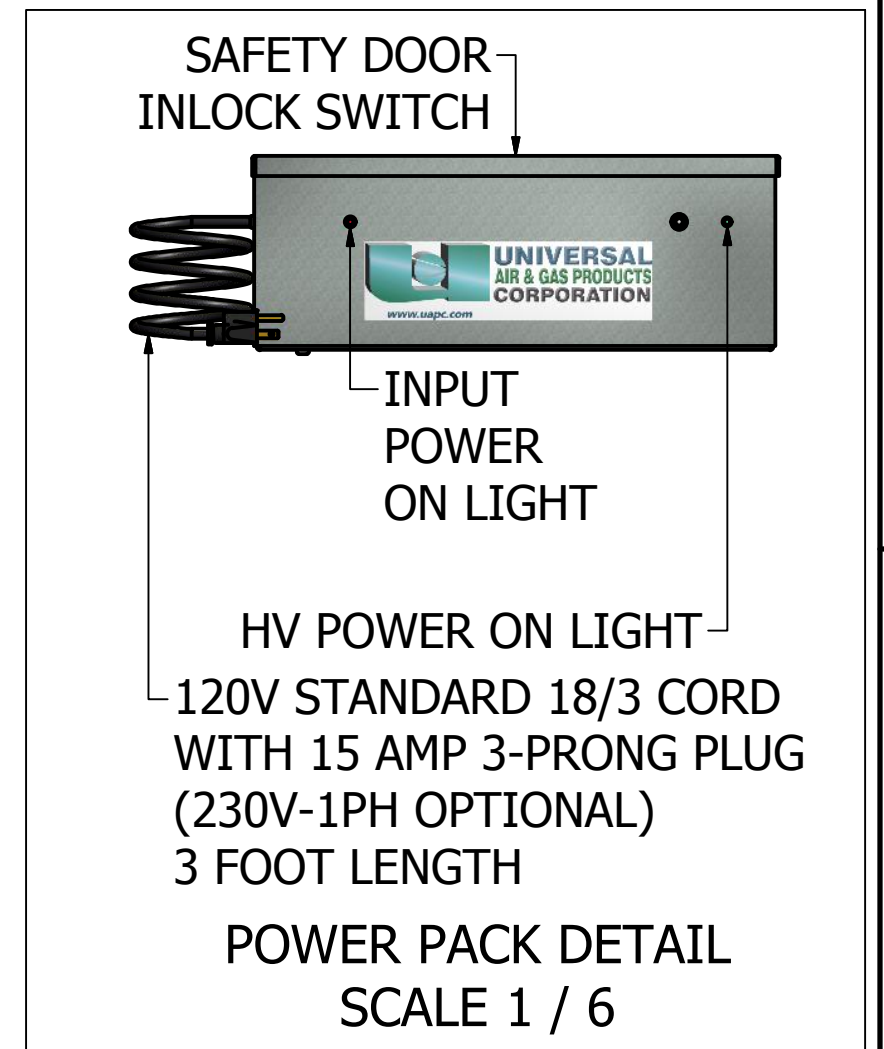
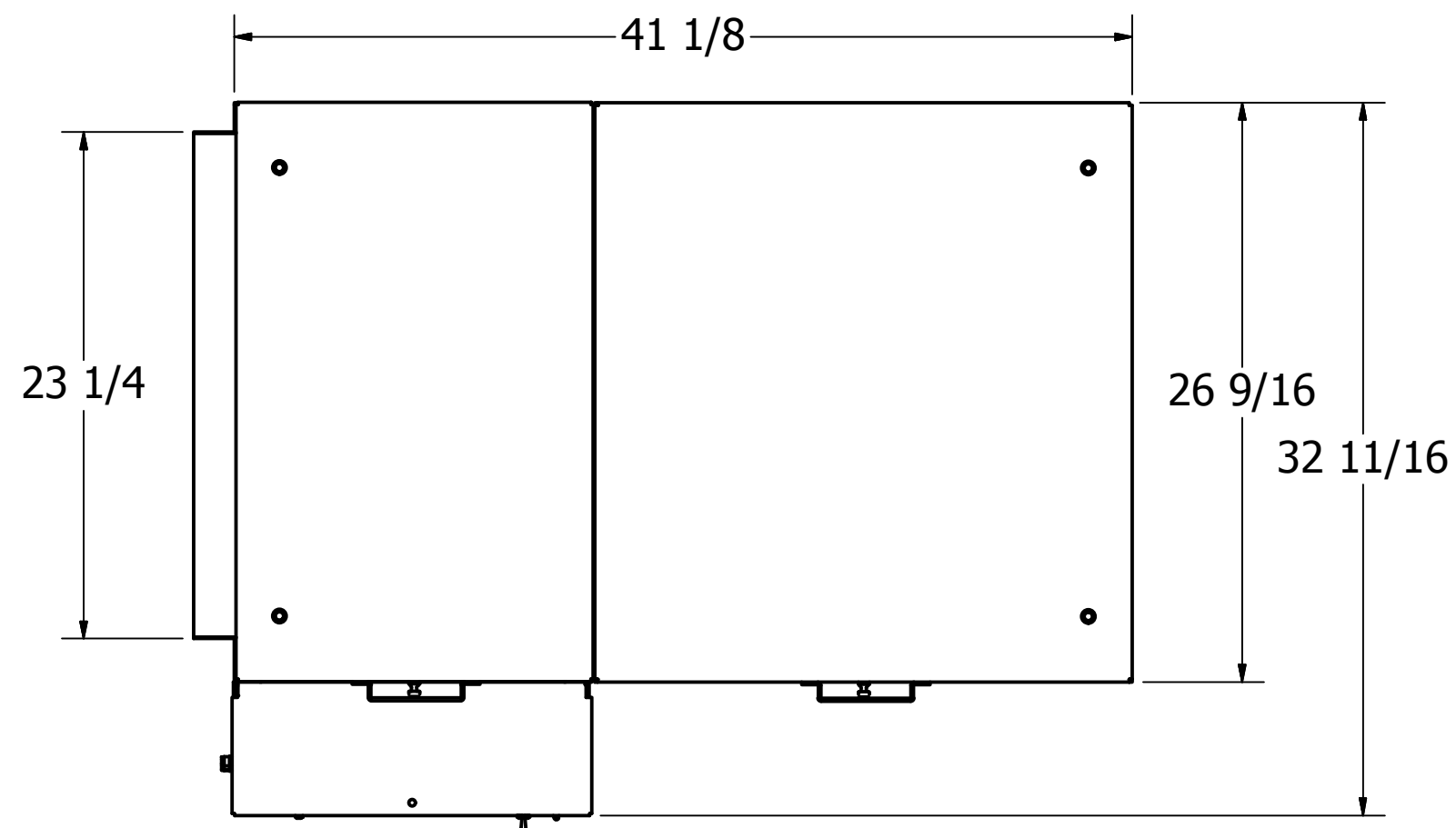


1200 CFM UAPC
PRECIPITATOR CELL

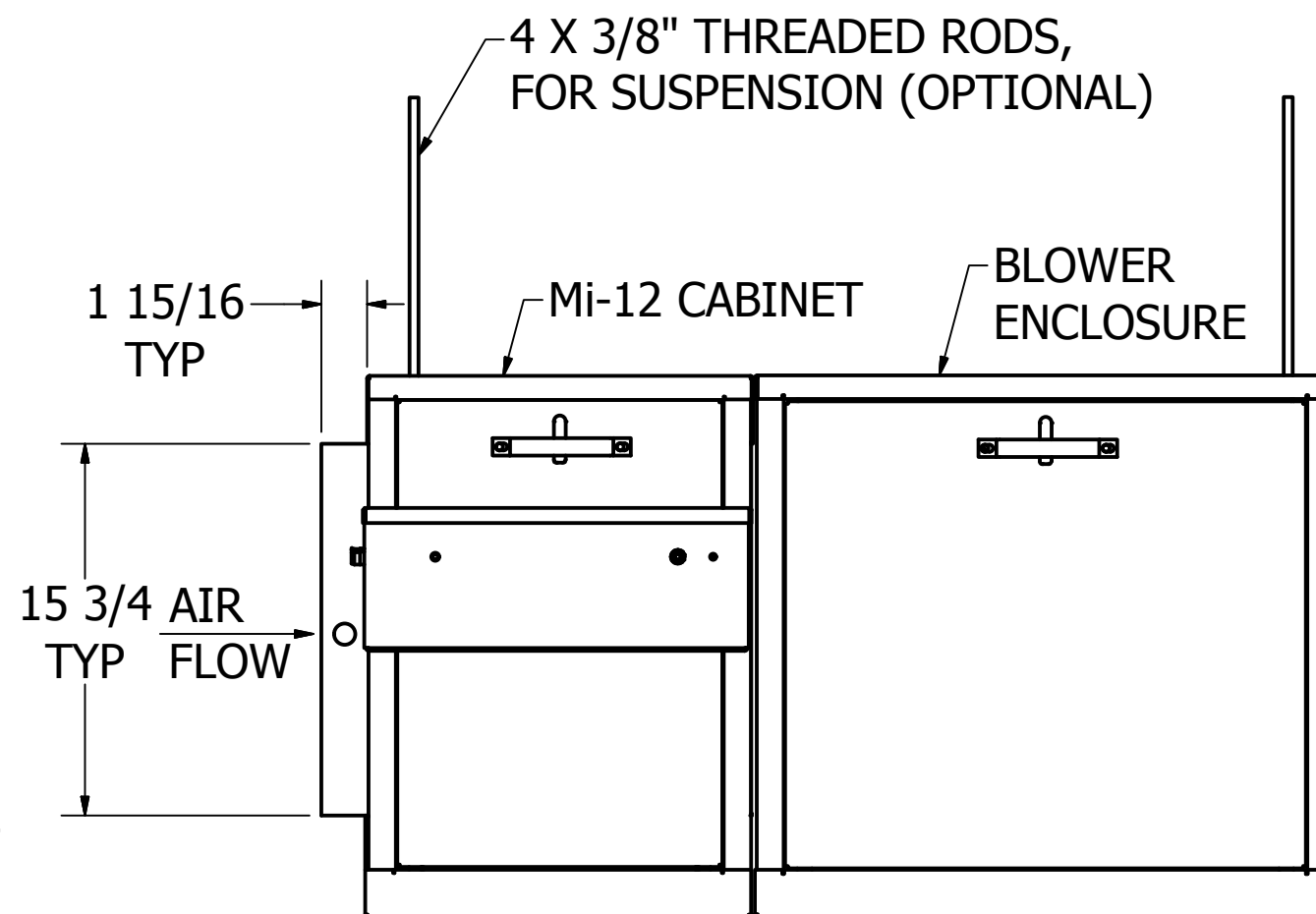
POWER PACK UNIT,
MOUNTED
(SEE DETAIL)



1" ALUMINUM
MESH PRE-FILTER

ALLOW 3 FEET
IN FRONT OF
UNIT FOR CELL
REMOVAL

6 3/4



4 X 3/8" THREADED RODS,
FOR SUSPENSION (OPTIONAL)

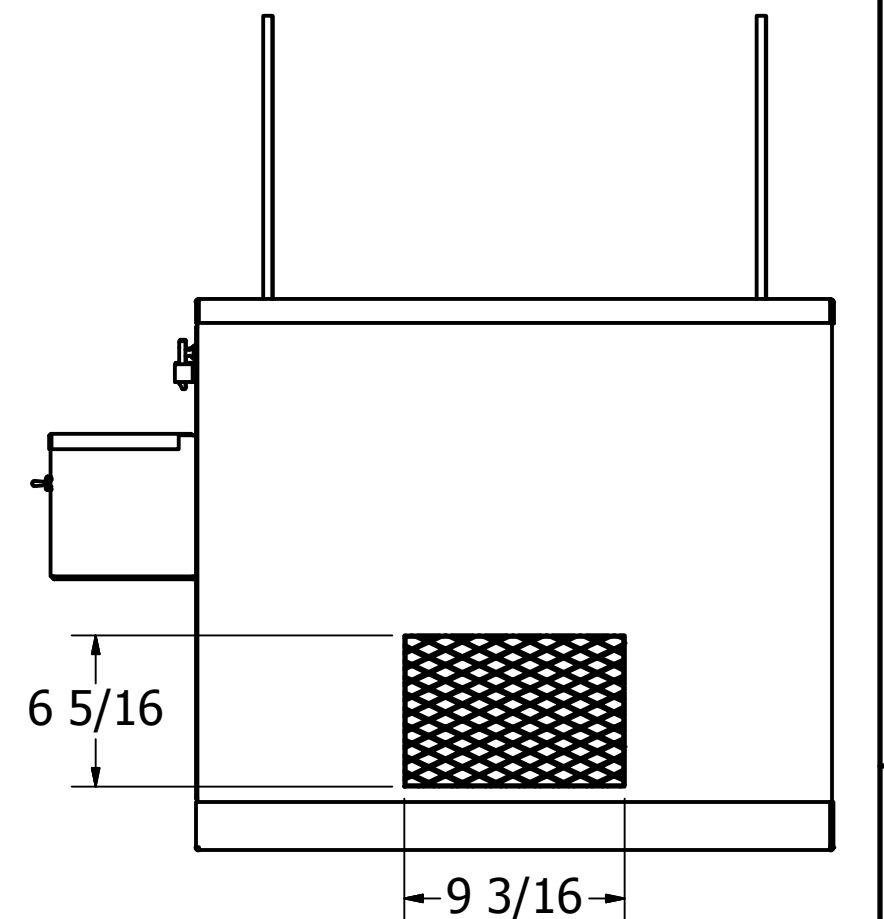
Mi-12 CABINET

BLOWER
ENCLOSURE

1 15/16
TYP

15 3/4 AIR
TYP FLOW

CLEAN AIR
EXHAUST



6 5/16

9 3/16

MATERIAL: 16 GA GALVANIZED

COMPANY
CONFIDENTIAL

This drawing and all information herein is the property of Universal Air Products Corp. It is confidential and must not be made public or copied. It is loaned, subject to return upon demand. It is not to be used directly or indirectly in any way detrimental to the interests of UNIVERSAL AIR PRODUCTS.

DRAWN KEF	7/28/2014	UNIVERSAL AIR & GAS PRODUCTS CORP. 1140 KINGWOOD AVE NORFOLK, VA 23502		
CHECKED		TITLE		
QA		Mi-12: 1200 CFM SELF-CONTAINED AIR CLEANER WITH BLOWER, PORTABLE		
MFG		SIZE		
APPROVED		C		
		DWG NO		REV
		03460047UL		B
SCALE 1/8		SHEET 1 OF 1		